

The Perfect Barrier Solution for New-Build Car Parks



The Berry Brisafe system undergoing tests at MIRA.



- Zero bay footprint
- Re-useable after impact
- Requires no anchorage into the car park deck
- Stylish vehicle and pedestrian protection
- Cost-effective single panel replacement
- Integrated anti-climb system
- Perforated panel alternative
- Independently tested to BS6399 and ICE Recommendations
- Combined in-fill offers numerous design opportunities
- RAL matching and even logo application

The system is ideal for new build car parks as it is fixed to the structural supports and creates a visually attractive barrier that combines an independently tested safety performance with architectural flexibility to enhance the appearance of the whole structure.

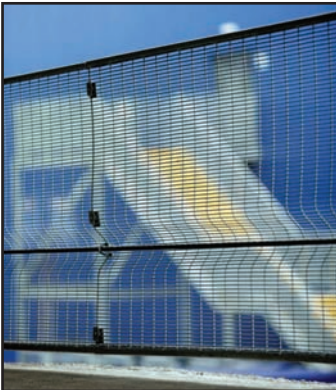
Unlike traditional vehicle barriers, the Berry Brisafe system can be supplied in any RAL colour and the combined in-fill can include custom designs and logos thereby providing innovative opportunities for designers to create unique themes and to integrate identities between car parks and the facilities they serve.

Combine all this with Berry's unbeatable reputation for design, manufacture, installation and service and it's easy to see that Berry Brisafe is the perfect solution.

Panel Infill Options



Perforated panel



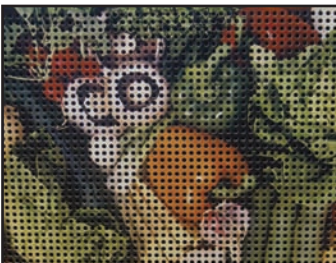
Wire Mesh



Arco Grating



Perforated Logo



Screen Printed



**For further information call 01902 491100
email sales@berrysystems.co.uk
or visit www.berrysystems.co.uk**