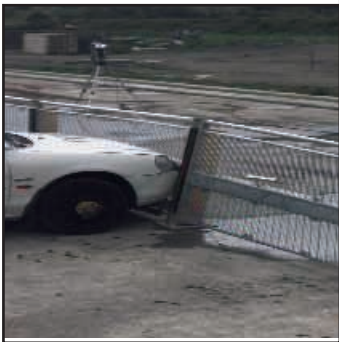


(Flexi-Panel)

Berry Flexi-Panel

The fast fit combined barrier and balustrade



Flexi-Panel under test at MIRA.



- Delivered to site pre-assembled for fast fit
- Bolted to car park columns, not the deck
- Flexi-Bollard interim posts to absorb impacts
- Zero bay footprint
- Integrated anti-climb system and pedestrian handrail
- Fast and simple single panel replacement
- Perforated panel alternative
- Available in 2.4m or 4.8m wide column centres to suit standard car park bay sizes
- Independently tested to BS6399 and ICE Recommendations
- Combined in-fill offers numerous design opportunities
- RAL matching and even logo application
- Flexi-Panel is a Berry Space-Safe system

Berry
SYSTEMS

Berry Systems - for safety barriers that give you the look you want and the protection you need.

Berry Systems, Springvale Business & Industrial Park, Bilston, Wolverhampton, WV14 0QL UK.

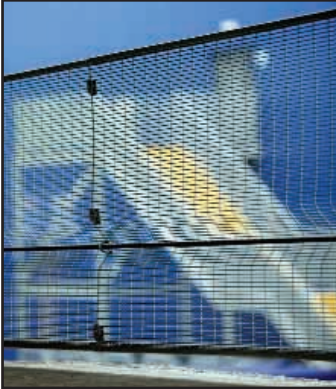
hs
INFRASTRUCTURE
PRODUCTS GROUP

Flexi-Panel

Panel Infill Options



Perforated panel



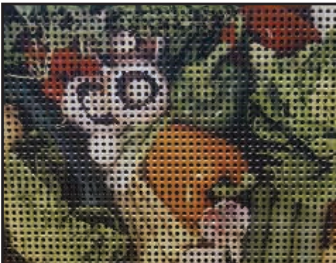
Wire Mesh



Arco Grating



Perforated Logo



Screen Printed

Berry Flexi-Panels provide a fast fit option for a system featuring a combined vehicle barrier and pedestrian handrail complete with anti-climb mesh. Ideally suited to steel framed structures, pre-assembled Flexi-Panels are bolted to the columns not the car park deck. This results in a zero bay footprint leaving more space for parking. Standard panels are 2.4 metres or 4.8 metres wide but where wider spans are required, Berry's unique Flexi-Bollards can be used as interim posts. These will 'flex' on impact returning to their normal position thereafter, minimising impact damage to both car and barrier.

Tests at MIRA showed that the system met the requirements of BS 6399 and also met the latest Institute of Civil Engineers, Institution of Structural Engineers and Government recommendations relevant to perimeter barriers for vehicle and pedestrian protection.

Like other Berry Space-Safe systems, Flexi-Panels can be supplied in any RAL colour and the range of in-fill options can include custom designs and logos thereby providing innovative opportunities for designers to create unique themes and to integrate identities between car parks and the facilities they serve.

Combine all this with Berry's unbeatable reputation for design, manufacture, installation and service and it's easy to see that Berry Flexi-Panels are a modern solution to the requirements of today's car parks.



**For further information call 01902 491100
or email sales@berrysystems.co.uk**

***Berry Systems - for safety barriers that give you
the look you want and the protection you need.***

Berry Systems, Springvale Business & Industrial Park, Bilston, Wolverhampton, WV14 0QL UK.
Tel +44 (0)1902 491100 Fax +44 (0)1902 494080 sales@berrysystems.co.uk www.berrysystems.co.uk