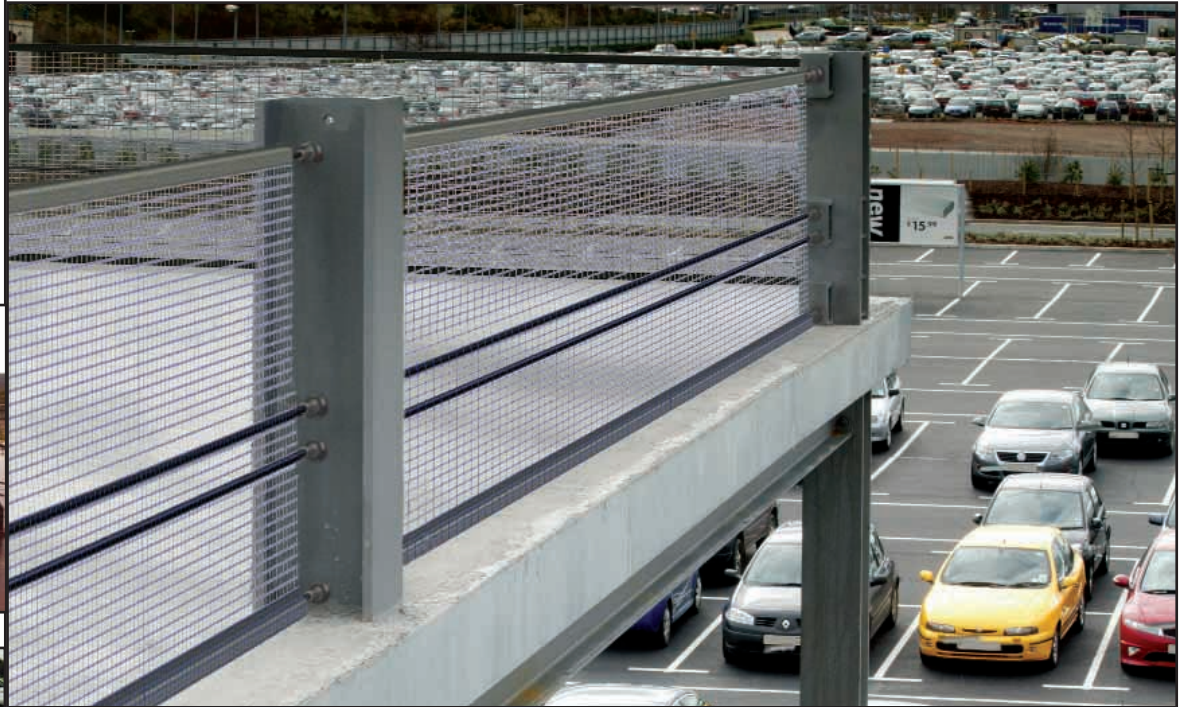




# The New Edge Protection Barrier from Berry Systems



Berry's System 3 undergoing tests at MIRA

## 3 Traditional Problems Solved

- Zero Bay Footprint
- Fast, Economic Repair after Impact
- Aesthetically pleasing

## 3 Main Components

- Horizontal bars
- Infill panels
- Anchor mounts

## 3 Important Benefits for Pedestrians

- Integrated Handrail
- Integrated Anti-climb
- Non 'snagging' panels protect against torn clothing and skin abrasions

## 3 Desirable Assets for Operators

- Low maintenance
- Zero bay footprint means more usable space
- Can feature corporate identity and logos

## 3 Critical Benefits for Drivers

- Gives on impact so no damage from gentle knocks
- Minimises damage from serious impacts
- Reduces potential injuries to drivers and passengers

## 3 Key Advantages for Specifiers

- Independently tested to BS 6399 and other recommendations
- Low deflection figures means barriers will not foul other components of the building
- Wide range of infill panel options

## Panel Infill Options

# New from Berry Systems - System 3 the car park edge protection barrier

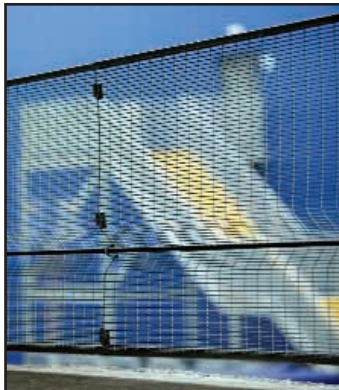
System 3 is a new development from Berry Systems. The tensioned steel bars are anchored to the structural steel columns of the car park and are easily and speedily replaced after an impact. The reduced impact deflection figures make System 3 attractive for both new build and refurbishment projects. The system is 'locked off' at each column location and, where suitable columns are not available, the Berry Flexi-Bollard can be employed to give absolute design flexibility and even lower deflection levels.

Independent dynamic impact tests were carried out at MIRA to BS6399 on 7.5 metre column centres and 2.5 metre centres with Flexi-Bollards.

Berry's full range of infill panel options are also available from wire mesh to screen printed panels to give specifiers and car park operators the ultimate choice of style and colour.



Perforated panel



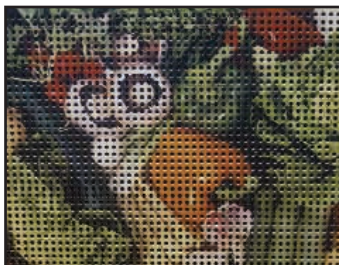
Wire Mesh



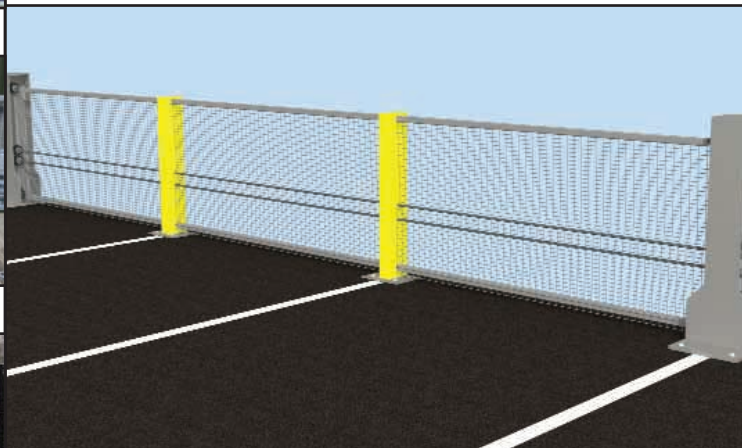
Arco Grating



Perforated Logo



Screen Printed



For further information call 01902 491100  
email [sales@berrysystems.co.uk](mailto:sales@berrysystems.co.uk)  
or visit [www.berrysystems.co.uk](http://www.berrysystems.co.uk)